



BWRDD STRYDLUN A PHEIRIANNEG Y CABINET

**YN SYTH AR ÔL Y PWYLLGOR CRAFFU
DYDD GWENER, 30 TACHWEDD 2018**

**YSTAFELLOEDD PWYLLGOR A/B - CANOLFAN DDINESIG
CASTELL-NEDD**

RHAN 1

1. Periodi Cadeirydd
2. Datganiadau o gysylltiadau
3. Cofnodion y Cyfarfod Blaenorol (*Tudalennau 3 - 10*)
4. Monitro Perfformiad Chwarter 2 (*Tudalennau 11 - 18*)

Adroddiad ar y cyd gan Bennaeth Peirianeg a Thrafnidiaeth a Phennaeth Strydlun

5. Cynnal a Chadw Priffyrdd - Côt Ymarfer newydd (*Tudalennau 19 - 22*)

Adroddiad Pennaeth Peirianeg a Thrafnidiaeth

6. Gorchymyn Traffig: Heol Salem, Cwmafan (*Tudalennau 23 - 26*)

Adroddiad Pennaeth Peirianeg a Thrafnidiaeth

7. Gorchymynion Traffig - Heol Kingdon Owen, Castell-nedd (*Tudalennau 27 - 34*)

Adroddiad Pennaeth Peirianeg a Thrafnidiaeth

8. Gorchymyn Traffig - Heol Merthyr, Glyn-nedd (*Tudalennau 35 - 38*)

Adroddiad Pennaeth Peirianeg a Thrafnidiaeth

9. Rhestr o gontractwyr cymeradwy (*Tudalennau 39 - 46*)

Adroddiad Pennaeth Peirianeg a Thrafnidiaeth

Blaenraglen Waith 2018-19

10. Eitemau brys

Unrhyw eitemau brys (boed yn gyhoeddus neu wedi'u heithrio) yn ôl disgresiwn y cadeirydd yn unol ag Offeryn Statudol 2001 rhif 2290 (fel y'i diwygiwyd).

11. Mynediad i gyfarfodydd

Penderfynu gwahardd y cyhoedd o'r eitemau canlynol yn unol â Rheoliad 4 (3) a (5) Offeryn Statudol 2001 Rhif 2290 a'r paragraffau eithriedig perthnasol o Ran 4 Atodlen 12A Deddf Llywodraeth Leol 1972.

RHAN 2

12. Gweithredu Brys 1282 - Cerbydau Cludiant Gwasanaethau Cymunedol newydd (yn eithriedig dan Baragraff 14) (*Tudalennau 49 - 56*)

Adroddiad preifat gan y Prif Weithredwr Cynorthwyol a'r Prif Swyddog Digidol

S.Phillips
Prif Weithredwr

**Canolfan Ddinesig,
Port Talbot**

20 Tachwedd, 2018

Aelodau Bwrdd y Cabinet:

Y Cynghorwyr: **E V Latham ac A Wingrave**

Nodiadau:

- (1) Os nad yw unrhyw aelod o fwrdd y Cabinet yn gallu bod yn bresennol, gall unrhyw aelod arall o'r Cabinet gyflenwi fel aelod â phleidlais ar y pwyllgor. Gofynnir i'r aelodau wneud y trefniadau hyn yn uniongyrchol ac yna i hysbysu staff y Gwasanaethau Democrataidd.*
- (2) Ystyrir barn y Pwyllgor Craffu blaenorol wrth wneud penderfyniadau (proses craffu cyn penderfynu). Gwahoddir Cadeirydd a Dirprwy Gadeirydd y Pwyllgor Craffu perthnasol i fod yn bresennol yn y cyfarfod hwn.*

Mae'r dudalen hon yn fwriadol wag

EXECUTIVE DECISION RECORD**CABINET BOARD - 19 OCTOBER, 2018****STREETSCENE AND ENGINEERING CABINET BOARD****Cabinet Board Members:**

Councillors: E.V.Latham (Chairperson) and A.Wingrave

Officers in Attendance:

M.Roberts, A.Lewis and T.Davies

1. APPOINTMENT OF CHAIRPERSON

Agreed that Councillor E.V.Latham be appointed as Chairperson for the meeting.

2. MINUTES OF PREVIOUS MEETING

That the Minutes of the meeting held on 7 September 2018, be noted.

3. FORMER LEISURE FACILITIES**Decisions:**

1. That the pavilion and field at Vivian Park be let to a local sports club and the former Tennis Court be retained as a fenced off area for general use by the public;
2. That the Tennis Courts at Talbot Park be retained as a fenced off area for general use by the public;
3. That the existing perimeter fence to the former Bowling Green 2 at Talbot Park be removed, and a fence moved to alongside the leased Bowling Green 1, and the former Bowling Green 2 area be incorporated into the general open space within the park;

4. That the former Bowling Green 2 at Dyfed Road be incorporated into the adjoining general open space within the park;
5. That the Tennis Court area at King George V Playing Fields be returned to open space for general public use;
6. That the former Tennis Courts at Parc Y Werin be retained as a fenced off area for general use by the public;
7. That Officers investigate if alternative use is considered feasible with the covenant holder at Parc Y Darren and report back to Members on any possible options;
8. That the use of the Bowling Green area at Ynyscorrwg Park as a continuation of open space within the park be endorsed;
9. That negotiations continue at Court Herbert Sports Field (behind the railway lines) with a view to concluding a lease in the near future.

Reason for Decisions:

To complete actions associated with previous forward financial plans and to ensure that areas which are currently unused are given alternative uses.

Implementation of Decisions:

The decisions will be implemented after the three day call in period.

4. **ARBORICULTURAL MANAGEMENT PLAN**

Decision:

That the Arboricultural Management Plan, as detailed at Appendix A to the circulated report, be endorsed.

Reason for Decision:

To allow a consistent approach to tree management across the county borough.

Implementation of Decision:

The decision will be implemented after the three day call in period.

5. **MANAGEMENT OF POTHOLES**

Decision:

That the detailed action plan contained in Appendix H to the circulated report, be endorsed.

Reason for Decision:

To ensure the Council's arrangements for dealing with pot holes remain suitable and sufficient.

Implementation of Decision:

The decision will be implemented after the three day call in period.

6. **TRAFFIC ORDER/S: GLYN ROAD AND MAES-Y-GLYN, LOWER BRYNAMMAN**

Decision:

That the objections to the Traffic Regulation Order at the junction of Glyn Road and Maes-Y-Glyn in Lower Brynamman be partially upheld, and a revised scheme be implemented, as detailed in Appendix B to the circulated report, and the objectors informed accordingly.

Reason for Decision:

To prevent indiscriminate parking in the interests of road safety and to maintain traffic flow for large vehicles.

Implementation of Decision:

The decision will be implemented after the three day call in period.

Consultation:

This item has been subject to external consultation.

7. **TRAFFIC ORDER/S: TYDRAW PLACE AND GLAN AFAN, PORT TALBOT**

Decision:

That the revocation of the existing Traffic Regulation Orders and the implementation of new Legal Orders at Tydraw Place and Glan Afan, Port Talbot (as detailed in the circulated report), be advertised, and should there be no objections, the Orders be implemented.

Reason for Decision:

To prevent indiscriminate parking, introduce controlled parking and implement a No Entry in the interest of highway safety.

Implementation of Decision:

The decision will be implemented after the three day call in period.

Consultation:

A consultation exercise will be carried out when the scheme is advertised.

8. **TRAFFIC ORDER/S: WATER STREET AND ST. DAVID'S STREET, NEATH**

Decision:

That the objection be over ruled, the Traffic Regulation Orders at Water Street and St. David's Street, Neath as detailed in the circulated report, be implemented as previously advertised, and the objector informed accordingly.

Reason for Decision:

To prevent indiscriminate parking and prevent a right turn into St David's Street in the interest of road safety.

Implementation of Decision:

The decision will be implemented after the three day call in period.

Consultation:

This item has been subject to external consultation.

9. **TRAFFIC ORDER/S: LAUREL AVENUE, LABURNUM AVENUE, CHESTNUT ROAD, MAMETZ COURT, BAGLAN PARK ACCESS ROAD, BAGLAN**

Decision:

That the objection be over ruled, the Traffic Regulation Order at Laurel Avenue, Laburnum Avenue, Chestnut Road, Mametz Court and Baglan Park Access Road, Baglan, as detailed in the circulated report, be implemented as previously advertised, and the objector informed accordingly.

Reason for Decision:

To prevent indiscriminate parking in the interest of road safety.

Implementation of Decision:

The decision will be implemented after the three day call in period.

Consultation:

This item has been subject to external consultation.

10. **SPEED CUSHIONS: A4109 CHURCH ROAD, MARTYN'S AVENUE, BRYNHYFRYD TERRACE AND COMMERCIAL STREET, SEVEN SISTERS, NEATH**

Decisions:

1. That two of the speed cushion locations on Church Road, Seven Sisters, be relocated and re-advertised, as detailed in the circulated report;
2. That one set of speed cushions on Martyn's Avenue, Seven Sisters be relocated away from a proposed new access to a property;

3. That the scheme to be implemented as advertised with the exception of the two locations of cushions on Church Road, Seven Sisters (Decision 1 above), that are to be re-advertised, and all other objections be overruled, and the objectors informed accordingly.

Reason for Decisions:

To reduce vehicular speeds in the interest of highway safety.

Implementation of Decisions:

The decisions will be implemented after the three day call in period.

Consultation:

This item has been subject to external consultation.

11. **ADDITIONAL WELSH GOVERNMENT GRANT APPROVAL FOR HIGHWAYS AND TRANSPORT 2018/2019**

Decision:

That the report be noted.

12. **CHRISTMAS CAR PARKING**

Officers amended the 'Implementation of Decision' Section to read 'The decision is proposed for implementation after the three-day call-in period' from 'The decision is proposed for immediate implementation'.

Decision:

That free Christmas parking be agreed in Neath, Port Talbot and Pontardawe Pay and Display Car Parks from Saturday 15 December 2018 to Tuesday 1 January 2019 inclusive (excluding Gnoll, Afan Forest Country Parks and Seafront car parks).

Reason for Decision:

Free parking over the festive period is likely to attract Christmas shoppers to our town centres supporting local businesses.

Implementation of Decision:

The decision will be implemented after the three day call in period.

CHAIRPERSON

Mae'r dudalen hon yn fwriadol wag

NEATH PORT TALBOT COUNTY BOROUGH COUNCIL

STREET SCENE AND ENGINEERING CABINET BOARD

30 November 2018

JOINT REPORT OF THE HEAD OF ENGINEERING AND TRANSPORT – D.W. GRIFFITHS THE HEAD OF STREETCARE – M. ROBERTS

Matter for: Monitoring

Wards Affected: All

Report Title

- 1 Key Performance Indicators 2018/2019 – Quarter 2 Performance (1st April 2018 – 30th September 2018)

Purpose of the Report

- 2 To report quarter 2 performance management data for the period 1st April 2018 to 30th September 2018 for Street Scene and Engineering Cabinet Board. This will enable the Street Scene and Engineering Cabinet Board and Scrutiny Members to discharge their functions in relation to performance management.

Executive Summary

- 3 A list of quarter 2 Key Performance Indicators (KPI's) with progress comments on each indicator are attached as appendix 1, these do not include those KPI's collected on an annual basis, and these will be reported in quarter 4. All KPI's with a CP reference e.g. CP/068 are Corporate Plan Key Performance Indicators.
- 4 KPI's that have improved on or achieved target are GREEN (green traffic light) status, KPI's that have not achieved target but performance is within 5% are AMBER (amber traffic light) status and KPI's that are 5% or more below target are RED (red traffic light) status.

- 5 Where available, appendix 1 provides performance data for quarter 2 performance for 2016/17 and 2017/18 (6 months data) plus current year 2018/19 (six months data), and a quarter 2 target (six months target) for 2018/19.
- 6 Appendix 2 provides quarter 2 information for Compliments and Complaints data, collected in line with the [Council's Comments, Compliments & Complaints Policy](#) for Street Scene and Engineering Cabinet Board purview.
- 7 Appendices 1 and 2 are new reports from the new Corporate Performance Management System (CPMS), which went live in August 2018.

Financial Impact

- 8 The performance described in the Report is being delivered against a challenging financial backdrop.

Equality Impact Assessment

- 9 This report is not subject to an Equality Impact Assessment.

Workforce Impacts

- 10 During 2017/18 the Environment Directorate saw a further downsizing of its workforce (by 17 employees) as it sought to deliver savings of £1,115k in the year

Legal Impacts

- 11 This Report is prepared under:
- 1) The Local Government (Wales) Measure 2009 and discharges the Council's duties to "make arrangements to secure continuous improvement in the exercise of its functions"
 - 2) Well-being of Future Generations (Wales) Act 2015
 - 3) The Neath Port Talbot County Borough Council Constitution requires each cabinet committee to monitor quarterly budgets and performance in securing continuous improvement of all the functions within its purview.

Risk Management

- 12 Failure to produce a compliant report within the timescales can lead to non-compliance with our Constitution. Also, failure to have robust performance monitoring arrangements could result in poor performance going undetected.

Consultation

- 13 There is no requirement under the Constitution for external consultation on this item.

Recommendation

- 14 For Members to monitor performance contained within this report.

Reasons for Proposed Decision

- 15 Matter for monitoring. No decision required.

Implementation of Decision

- 16 Matter for monitoring. No decision required.

Appendices

- 17 Appendix 1 – Corporate Plan Key Performance Indicators 2018/2019
– Quarter 2 Performance (1st April 2018 – 30th September 2018)
- 18 Appendix 2 - Compliments and Complaints information – Quarter 2
2018/2019

Officer Contact

- 19 Joy Smith, Road Safety and Business Performance Manager.
Telephone: 01639 686581. E-Mail: j.smith@npt.gov.uk



Tudalen 17

Performance Indicators


Neath Port Talbot Council

Appendix 1 - Streetscene and Engineering Cabinet Board - Key Performance Indicators - Quarter 2 - 2018/19



Print Date: 16-Nov-2018

How will we know we are making a difference (01/04/2018 to 30/09/2018)?

PI Title	Actual 16/17	Actual 17/18	Actual 18/19	Target 18/19	Perf. RAG
Organisation					
CP/067- PAM 030 - Percentage of waste, reused, recycled or composted	62.77	62.14	63.33	62.00	 Green
23,914 of 37,760 tonnes of waste collected. This is a 1.2% increase compared to the same time last year although, this is however subject to NRW validation.					
CP/068 - PAM 043 - Kilograms of residual waste generated per person			97.51		
13,846,000 kg's of residual waste. Population of 142,000. This is a new indicator introduced this year and therefore does not currently have a set target (data from this year will set the base line for future years). The updated Waste Strategy does, however, also contain measures to reduce residual waste					
PI/346 - WMT/010i - The percentage of local authority municipal waste prepared for re-use	0.44	0.40	0.24		
0.48 of 37760 tonnes of waste collected. 2017/2018 quarter 2 figure was revised to 0.40% following NRW validation.					
PI/347 - WMT/010ii - The percentage of local authority municipal waste: Incinerator Bottom Ash recycling rate	3.44	2.36	3.46		
1,307 of 37,760 tonnes of waste collected. 2017/2018 quarter 2 figure was revised to 2.36% following NRW validation.					
PI/348 - WMT/010ii - The percentage of local authority municipal waste: Kerbside dry recycling rate	18.31	18.52	18.53		
PI/349 - WMT/010ii - The percentage of local authority municipal waste: Household Waste Recycling Centres dry recycling rate	23.69	22.68	23.66		
8935 of 37760 tonnes of waste collected					
PI/350 - The percentage of local authority municipal waste collected as source segregated Bio-wastes and composted or treated biologically in another way	16.89	18.18	17.44		
6,586 of 37760 tonnes of waste collected					



Tudor
Street
19

Performance Indicators

Southport Council

Appendix 2 - Streetscene and Engineering - Compliments and Complaints - Quarter 2 - 2018/19



Print Date: 16-Nov-2018

How will we know we are making a difference (01/04/2018 to 30/09/2018)?

PI Title	Actual 16/17	Actual 17/18	Actual 18/19	Target 18/19	Perf. RAG
Organisation					
PI/272 - Streetscene and Engineering - % of complaints at Stage 1 that were upheld/partially upheld	23.53	0.00	18.75		
3 of 16 Stage 1 complaints were upheld, compared to 0 of 5 Stage 1 complaints recorded for the same quarter 2017/2018					
PI/273 -Streetscene and Engineering - % of complaints at stage 2 that were upheld/partially upheld	0.00	0.00	0.00		
0 of 1 Stage 2 complaints were upheld in total, compared to 0 of 4 Stage 2 complaints recorded quarter 2 last year					
PI/274 -Streetscene and Engineering - % of complaints dealt with by the Public Services Ombudsman that were upheld/partially upheld	0.00	0.00	0.00		
No Ombudsman investigations were received this quarter, as per the same quarter last year					
PI/275 - Streetscene and Engineering - Number of compliments received from the public	43.00	17.00	28.00		
There has been a slight decrease in the number of compliments compared to the same quarter last year					

T
D
S
E
N
20

NEATH PORT-TALBOT COUNTY BOROUGH COUNCIL

Street Scene & Engineering Cabinet Board

30 November 2018

Report of the Head of Streetcare

M. Roberts

Matter for Decision

Wards Affected: All Wards

Highway Maintenance - New code of practice

Purpose of Report

1. To inform Members of progress in adopting the new code of practice for highway maintenance and adopt interim arrangements pending completion of revised Council policies and procedures.

Background

2. The Council has a Highway Maintenance Plan in place which sets out the Council's process for planned and reactive highway maintenance. This plan was developed in compliance with "Well-Maintained Highways, the code of practice for highway maintenance management which was published in July 2005."
3. The council relies on the policies derived from these documents when called upon to demonstrate it is meeting its legislative duties as the Highway Authority.
4. A revised Code of Practice for Highways "Well Managed Highway Infrastructure" was published in October 2016. The revised code requires authorities to apply a "risk-based approach" to the management of all highway assets and authorities were given two years to implement a response to the new code.
5. The County Surveyors Society Wales (CSSW) is coordinating the development of a nationally consistent response to the code across all Welsh local authorities. Using CSSW's national Highway

Asset Management Project, guidance is being developed to enable authorities to apply a consistent method of risk assessment.

6. In accordance with the emerging CSSW guidance a review of highway asset management arrangements is being undertaken as follows:-
 - A review of the Network hierarchy used as the basis for inspection and repair regimes
 - A review of the inspection regime
 - A review of the standards applied to the repair of highway defects (investigatory levels and response times)

On completion, these will be incorporated into a revised Highway Maintenance Plan and presented for adoption.

7. In order to protect the authority's position in the interim, it is proposed that the current policies and procedures as set out in the Council's existing Highway Maintenance Plan should remain in effect until such time that the review is completed.
8. Further to the new Code of Practice, local authorities should work closely with their insurance partners to ensure that the best risk management measures have been put in place for their communities. In 2017 this Council provided open access to its insurers to audit the council's processes. There were some minor improvement suggestions (which have been completed) but otherwise the Council was essentially given 'a clean bill of health', which is reflected in the fact that this Council is in the upper quartile for the repudiation of third party insurance claims. Consequently on a 'risk management' basis it would seem reasonable to continue with current procedures and practices, notwithstanding changes in the Code of Practice, pending completion of the ongoing review.

Financial Impact

9. There are no financial impacts associated with this report

Equality Impact Assessment

9. There are no equality impacts associated with this report

Workforce Impact

10. There are no workforce impacts associated with this report

Legal Impact

11. There are no legal impacts associated with this report

Risk Management

12. Given the introduction of the new Code of Practice it is necessary to confirm the Council's interim management arrangements pending update of the Council's Highway Maintenance Plan and associated documents.

Consultation

13. There is no requirement for consultation on this matter

Recommendation(s)

14. It is recommended that the current Highway Maintenance Plan continues to be used until the County Surveyors Society Wales (CSSW) development of a nationally consistent response to the code across Welsh local authorities is completed and this will be the subject of a further report.

Reason for proposed decision(s)

15. To facilitate the introduction of a consistent "risk based" approach to the management of all highway assets across the Welsh authorities.

Implementation of decision

16. The decision is proposed for implementation after the three day call in period.

Appendices

17. None

List of background papers

18. None

Officer Contact

19. Mr Steve Owen, Highways and Drainage Manager.
-Tel: 01639 686403 or e mail: s.owen@npt.gov.uk

NEATH PORT TALBOT COUNTY BOROUGH COUNCIL

Streetscene & Engineering Cabinet Board

30 November 2018

Report of the Head of Engineering & Transport

D. W. Griffiths

Matter for Decision

Wards Affected: Bryn and Cwmavon

Proposed Prohibition of Waiting at Any Time Order: B4286 Salem Road, Cwmavon

Purpose of Report

1. To consider the objections received following the advertisement of the above scheme as indicated in Appendix A.

Executive Summary

2. One letter of objection was received in relation to the proposed Traffic Regulation Order.
3. The report outlines the objection and the recommendations for the scheme.

Background

4. The scheme was included as part of the Road Safety grant scheme in which members of the public have previously complained about the lack of visibility when exiting Heol Jwbili onto the B4286 Salem Road, in particular when looking west.

Financial Impact

5. The work will be funded by the Welsh Government Capital Road Safety Grant scheme.

Equality Impact Assessment

6. A Screening Assessment has been undertaken to assist the Council in discharging its Public Sector Equality Duty under the Equality Act 2010. After completing the assessment, it has been determined that this function does not require an Equality Impact Assessment.

Workforce Impacts

7. There are no workforce impacts associated with this report.

Legal Impacts

8. The scheme was advertised for a 21-day period.

Risk Management

9. There are no risk management issues associated with this scheme.

Consultation

10. A consultation exercise was carried out when the scheme was advertised.
11. One letter of objection was received from a resident of the affected road.
12. The objection letter is summarised as follows:-

The objector is concerned that there will be a reduction in parking outside the affected property if the double yellow lines are to be installed.

13. The objections have been discussed with the Local Members whom fully support the scheme as advertised.

Recommendations

It is recommended that:-

14. The objections are over ruled, that the scheme is implemented as previously advertised and that the objectors are informed accordingly.

Reasons for Proposed Decision

15. To improve visibility exiting the junction of Heol Jwbili/Salem Road in the interest of road safety.

Appendices

16. Appendix A – Plan of the proposed scheme.

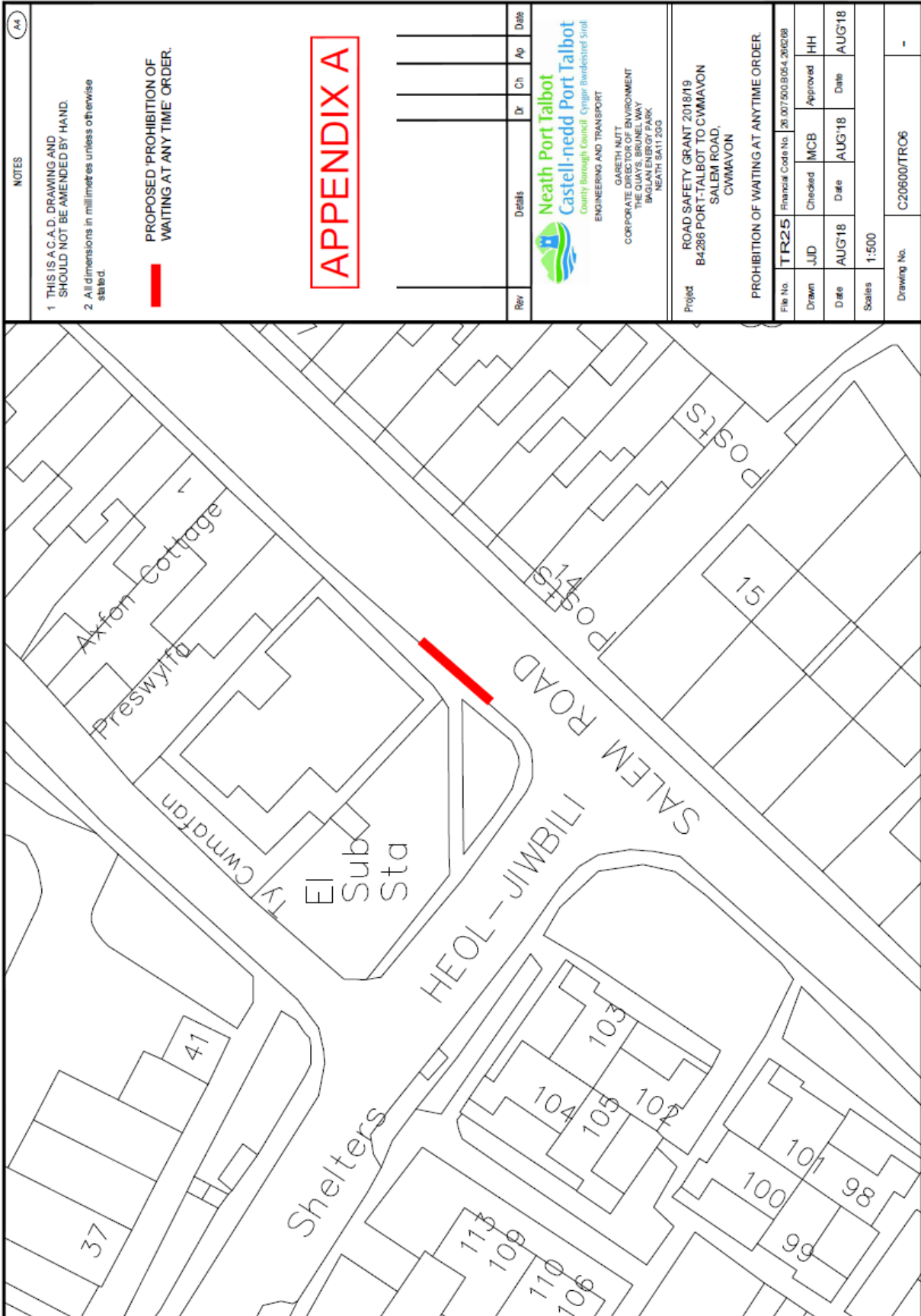
List of Background Papers

17. None

Officer Contact

18. Mr Jonathan Davies, Engineering & Transport
Tel. No. 01639 686494
Email j.davies11@npt.gov.uk

Appendix A



NOTES

1 THIS IS A C.A.D. DRAWING AND SHOULD NOT BE AMENDED BY HAND.
 2 All dimensions in millimetres unless otherwise stated.

PROPOSED PROHIBITION OF WAITING AT ANY TIME ORDER.

APPENDIX A

Rev	Details	Dr	Ch	Ap	Date

Neath Port Talbot
Castell-nedd Port Talbot
 County Borough Council Cynghor Bwrdeistref Stryd
 ENGINEERING AND TRANSPORT
 GARETH MITT
 CORPORATE DIRECTOR OF ENVIRONMENT
 THE QUAYS, BRUNEL WAY
 BAGLAN ENERGY PARK
 NEATH SA11 2QG

Project ROAD SAFETY GRANT 2018/19
 B4286 PORT-TALBOT TO CWMAVON
 SALEM ROAD,
 CWMAVON

PROHIBITION OF WAITING AT ANY TIME ORDER.

File No.	TR25	Financial Code No.	26.007.500.B054.260208
Drawn	JJD	Checked	MCB
Date	AUG18	Date	AUG18
Scale	1:500	Approved	HH
Date	AUG18	Date	AUG18

Drawing No. C20600/TRO6

NEATH PORT TALBOT COUNTY BOROUGH COUNCIL

Streetscene & Engineering Cabinet Board

30 November 2018

Report of the Head of Engineering & Transport

D. W. Griffiths

Matter for Decision

Wards Affected: Neath South

Proposed One Way Order and No Entry Order: Kingdon Owen Road, Neath

Purpose of Report

1. To consider the objections received following the advertisement of the above scheme as indicated in Appendix A.

Executive Summary

2. Two letters of objection were received stating they had concerns that in winter months (snow and ice) vehicles were unable to access the road via the left hand side due to the steep gradient. The approach from the right hand side is at less of a gradient allowing easier access and egress during the icy conditions. The proposed one way order requires vehicles to access the road via the left hand side.
3. The report outlines the objections and the recommendations for the scheme.
4. The objection letters are indicated in Appendix B.

Background

5. The scheme was prioritised by the Local Members following representation from the residents to introduce a one way system.

Financial Impact

6. The work will be funded by the Capital Works Programme.

Equality Impact Assessment

7. A Screening Assessment has been undertaken to assist the Council in discharging its Public Sector Equality Duty under the Equality Act 2010. After completing the assessment, it has been determined that this function does not require an Equality Impact Assessment.

Workforce Impacts

8. There are no workforce impacts associated with this report.

Legal Impacts

9. The scheme was advertised for a 21-day period.

Risk Management

10. There are no risk management issues associated with this scheme.

Consultation

11. A consultation exercise was carried out when the scheme was advertised.
12. Two letters of objection were received from residents of the effected road.
13. The objection letters are contained in Appendix B.
14. The objections have been discussed with the local members whom fully support the scheme as advertised.

Recommendations

It is recommended that:-

15. The objections are over ruled, that the scheme is implemented as previously advertised and that the objectors are informed accordingly.

Reasons for Proposed Decision

16. To improve traffic flow in the interest of road safety.

Implementation of Decision

17. The decision is proposed for implementation after the three-day call-in period.

Appendices

18. Appendix A – Plan of the proposed scheme.
19. Appendix B - Letters of objection.

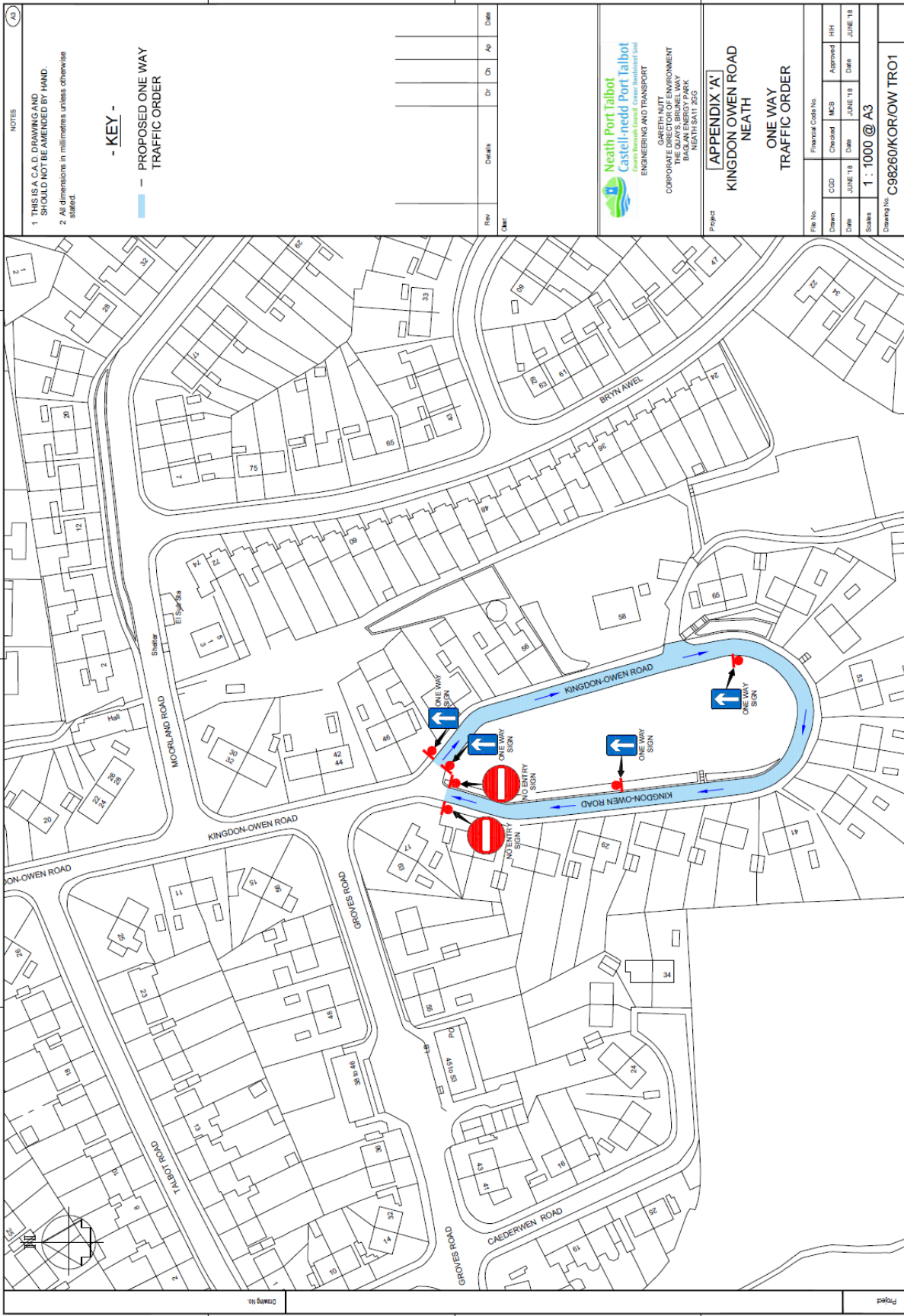
List of Background Papers

20. None

Officer Contact

21. Mr Martin Brumby, Engineering & Transport
Tel. No. 01639 686013
Email m.brumby@npt.gov.uk

Appendix A



Appendix B

The Quays
Brunel Way
Baglan Energy Park Neath
SA11 2GG

Dear Sir/Madam,

I am writing in relation to the one-way system being proposed for Kingdon Owen Road. Not sure, this has been thought through with regards to the winter months as when we have snow and/or ice the best route up is via right side of the island as you come up the fork. We find this the best option, as the gradient is not as intense as the left side is.

In the winter the gritting lorry does not come up which I find very strange as they seem to do the rest of the area and actually come up Kingdon Owen Road and turn right onto Groves Road, so why they just can't slip around the island is beyond me. I do not accept that because it's a big vehicle as the refuse collection lorry comes up there every 2 weeks with no issues.

Obviously, it is illegal to drive the wrong way on a one-way system, so it will make life very difficult when it comes to the winter months. I would like to know the reasons for the proposed move is this a council proposal or has one of the residents asked for this to be done?

Another thing I would like to point out is as you come up to the island and make a left, which is going around the proposed one-way system. The sharp left and then right (marked in Yellow on the photo attached) when there are cars and/or vans parked on in that area it can be very difficult to get passed them, you will see if you have visited the area tyre marks on the grass where vehicles have been just to make it passable. I know residents will often take go up the other side just to avoid these issues.

I would suggest if this system is put in place, then there needs to be some work done on that area of the road to make it wider for access.

My conclusion is I reject the proposed one-way system on Kingdon Owen Road.

Sincerely yours,



Dear Sir,

2/10/2018

With regards to your letter re- placing a
No Entry sign in Kingdon Owen Rd. Roundabout down
hill. I have lived in this street nearly 60 years
and in the winter with the ice and snow. Not any
form of transport can get up the hill. People have
to use the other side. I usually have to ring
Mr Peter Rees to send the gridders up here. One
year it was so bad up here. My son had to
ask the men in the street to help him to clear
the lower side of the road to get their cars
out of the street.

Thanking You.

REPLY REQUIRED BY

16 OCT 2018

Mae'r dudalen hon yn fwriadol wag

NEATH PORT TALBOT COUNTY BOROUGH COUNCIL

Streetscene & Engineering Cabinet Board

30 November 2018

Report of the Head of Engineering & Transport

D. W. Griffiths

Matter for Decision

Wards Affected: Glynneath

Proposed No Waiting, No Loading or Unloading at Any Time Traffic Regulation Order: Merthyr Road, Glynneath

Purpose of Report

1. To obtain Members' approval to advertise the Legal Orders for No Waiting, No Loading or Unloading at Any Time Traffic Regulation Order at Merthyr Road, Glynneath.

Executive Summary

2. The report outlines the proposed Order and the reason why the Order is required.

Background

3. The Orders are required to prevent indiscriminate parking in a bus turning area. The proposed scheme is indicated in Appendix A.

Financial Impact

4. The work will be funded by a Welsh Government grant.

Equality Impact Assessment

5. A Screening Assessment has been undertaken to assist the Council in discharging its Public Sector Equality Duty under the Equality Act 2010. After completing the assessment, it has been determined that this function does not require an Equality Impact Assessment.

Workforce Impacts

6. There are no workforce impacts associated with this report.

Legal Impacts

7. To be advertised for a 21-day period.

Risk Management

8. There are no risk management issues associated with this scheme.

Consultation

9. A consultation exercise will be carried out when the scheme is advertised.

Recommendations

It is recommended that:-

10. Approval be granted to advertise the proposed Traffic Regulation Order and the proposal be implement if no objections are received.

Reasons for Proposed Decision

11. To prevent indiscriminate parking in a bus turning area in the interest of highway safety.

Implementation of Decision

12. The decision is proposed for implementation after the three-day call-in period.

Appendices

13. Appendix A – Plan of the proposed scheme.

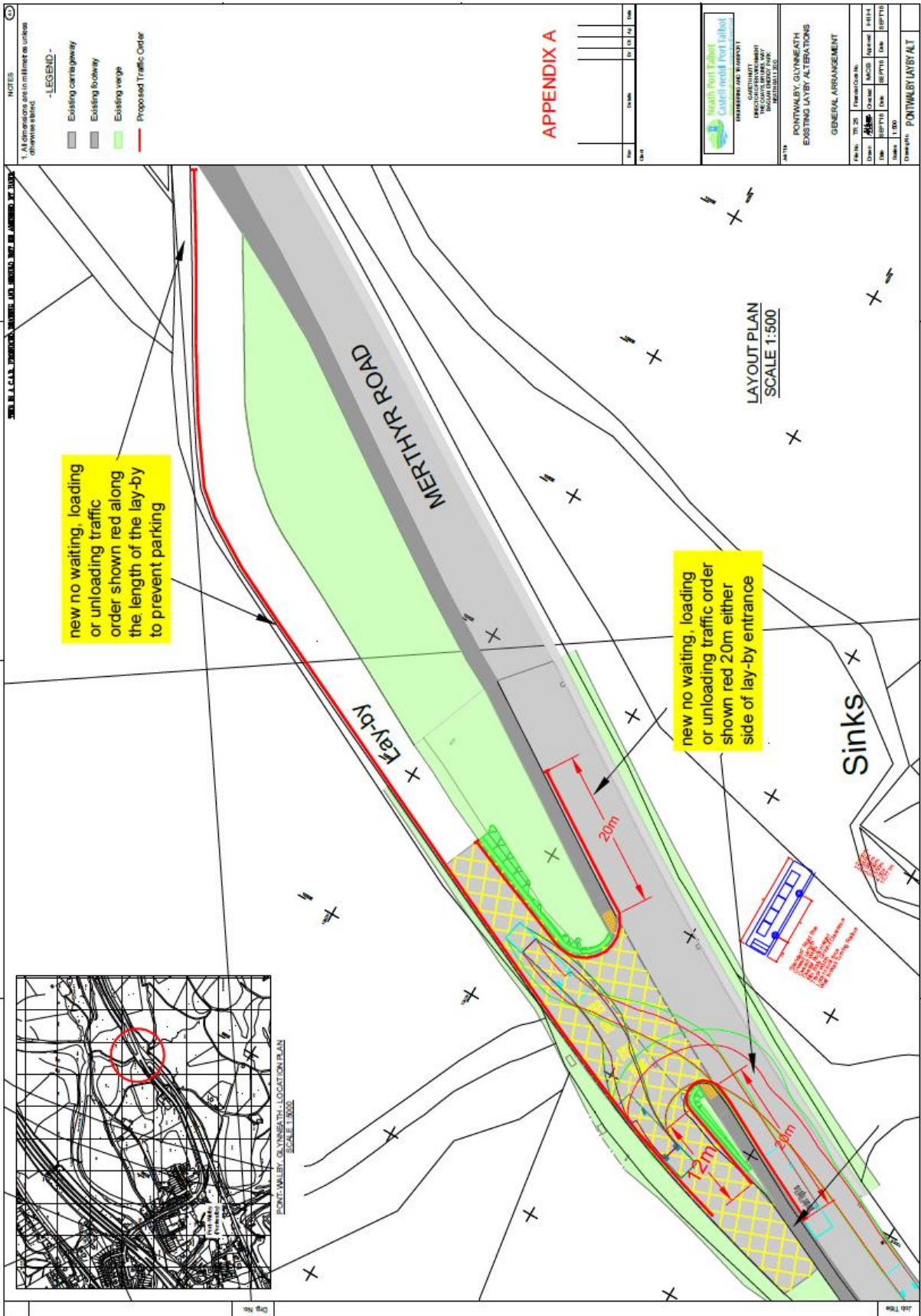
List of Background Papers

14. None

Officer Contact

15. Mr Martin Brumby, Engineering & Transport
Tel. No. 01639 686013
Email m.brumby@npt.gov.uk

Appendix A



NEATH PORT TALBOT COUNTY BOROUGH COUNCIL

Streetscene & Engineering Cabinet Board

30 November 2018

Report of the Head of Engineering & Transport

D. W. Griffiths

Matter for Decision

Ward Affected: All

List of Approved Contractors

Purpose of Report

1. To seek Members' approval to amend the Approved List of Contractors.

Executive Summary

2. To seek approval for contractors to be included on the Approved list of contractors.

Background

3. Members will be aware that on previous occasions reports concerning the compilation of the Approved List of Contractors have been presented to Cabinet Board. Members are updated on a regular basis on outstanding issues relating to the lists.
4. The full list of categories is set out in Appendix A for your information.
5. The process gives local companies an opportunity to provide goods and services to the Council.
6. The following firms have applied to be included in the list and have passed the required assessments:-

<u>FIRM</u>	<u>CATEGORY</u>
CCTV Access Control Ltd	3, 47, 48.
Protectorcomms Ltd	47,48,49,50,61,68,111(Access Control)

Financial Impact

7. None.

Equality Impact Assessment

8. A Screening Assessment has been undertaken to assist the Council in discharging its Public Sector Equality Duty under the Equality Act 2010. After completing the assessment it has been determined that this function does not require an Equality Impact Assessment.

Workforce Impacts

9. There are no workforce impacts associated with this report.

Legal Impacts

10. There are no legal impacts associated with this report.

Risk Management

11. There are no risk management issues associated with this report.

Consultation

12. The Approved List of Contractors is promoted on NPT web pages.

Recommendations

13. It is recommended that:-

The contractors in section 6 of this report are included on the Approved List for the relevant categories.

Reasons for Proposed Decision

14. To keep the Approved List up to date and as far as possible ensure a competitive procurement process.
15. These recommendations to be adopted for the purpose of supplying a List of Contractors for invitation to tender/quote within the relevant category.

Implementation of Decision

16. The decision is proposed for implementation after the three-day call-in period.

Appendices

17. Appendix A – Approved List of Categories

List of Background Papers

18. None

Officer Contact

19. Hasan Hasan, Engineering Manager
Tel. No: 01639 686463
email: h.hasan@npt.gov.uk

Appendix A

General Services

1. Signs
2. Plant Hire
3. Security
4. Clinical Waste
5. Pest Control
6. Re-Cycling
7. Waste Disposal (e.g. Car, Computers, Steel)
8. Crowd Control
9. Traffic Management
10. Portable Buildings
11. Scaffolding

Building Construction / Maintenance

12. Building Construction £50,000 - £200,000
13. Building Construction £200,000 - £1m
14. Building Construction over £1m
15. Minor Building Works below £50,000
16. Works of Adaptation below £5,000
17. Re-Roofing
 - a) Felt & Asphalt below £10,000 / above £10,000
 - b) Tiles & Slate below £10,000 / above £10,000
 - c) GRP
 - d) High Performance Coverings
 - e) Sheeting & Cladding
18. Supply & Installation of Floor Finishes
 - a) Flexible Sheet, Tiles, Carpets
 - b) Jointless
 - c) Rigid Tiles, Slabs, Mosaics
 - d) Wood
19. Plastering
20. Painting & Decorating
21. Supply & Installation of Windows / Doors
(Windows to BS 7412, Doors to PAS 23/1, PAS 24/1 to BS 7950 Kitemark Scheme)
 - a) PVCU (using Aluplast System)
 - b) Timber
 - c) Aluminium
 - d) Steel
 - e) Roller Shutter

- f) Security Doors
- g) Automatic Doors
- 22. Suspended Ceilings
- 23. Welding / Fabrication below £5,000
- 24. Welding / Fabrication above £5,000
- 25. Stonework Repair / Restoration / Cleaning
- 26. Glazing & Safety Filming
- 27. Wall Tie Replacement
- 28. External Wall Insulation
- 29. Damp Proofing / Dry Rot / Woodworm Treatment
- 30. Cavity Wall and / or Loft Insulation
- 31. Asbestos Handling & Removal, Asbestos Surveys & Asbestos Consultancy Services
- 32. Window Blinds
- 33. Shop Fitters – Specialist Joinery
- 34. Refurbishment of Laboratories
- 35. Clearance of Void properties
- 36. Works to Listed Buildings

Mechanical & Electrical Engineering

- 37. Domestic (including Housing) Plumbing & Central Heating below £50,000
- 38. Domestic (including Housing) Plumbing & Central Heating above £50,000
- 39. Commercial Heating & Ventilating below £100,000
- 40. Commercial Heating & Ventilating above £100,000
- 41. Domestic (including Housing) Electrical Installation below £50,000
- 42. Domestic (including Housing) Electrical Installation above £50,000
- 43. Commercial Electrical Installations below £100,000
- 44. Commercial Electrical Installations above £100,000
- 45. Gas Boiler Maintenance
- 46. Maintenance of Building Management Systems for Heating & Ventilation

Mechanical & Electrical Specialist Services

- 47. CCTV
- 48. Intruder Alarms
- 49. Fire Alarms
- 50. Warden Call System
- 51. Lifts
- 52. Swimming Pool Plant Equipment
- 53. Water Systems Cleaning & Chlorination
- 54. Ductwork System Cleaning & Sterilisation

55. Domestic & Commercial Kitchen Equipment Maintenance
56. Supply & Installation of Specialist Kitchen Equipment / Fittings
57. Installation, Testing & Maintenance of Local Exhaust Ventilation (LEV)
58. Water Systems – Risk Assessment
59. Supply & Installation of Pipework & Ductwork Installation
60. Supply, Installation and / or Servicing of Automatic Door Systems
61. PA Systems / Sound Systems
62. Stage Lighting
63. Service / Repair of Kilns
64. Supply, Installation & Servicing of Leisure Services Equipment
65. Specialist Steelwork (stainless Steel & Fabricated Works)
66. Lightening Conductors
67. Fire Fighting Equipment including Hose Reels
68. Smoke / Fire Detectors
69. Stage Equipment including Curtains, Gantry, Special Effects etc.
70. Computer / Telephone Cabling

Civil Engineering

71. Civil Engineering £0 – £25,000
72. Civil Engineering £25,000 – £250,000
73. Civil Engineering £250,000 – £1m
74. Civil Engineering over £1m
75. Land Reclamation
76. Sewers & Drainage
77. Hard & Soft Landscaping
78. Ground Investigation
79. Demolition
80. Surfacing, Carriageway & Footways
81. Surface Dressing
82. Road Markings & Reflective Road Studs
83. Carriageway Slurry Surfacing & Footways
84. Fencing
85. Gabion & Blockstone
86. Steel Fabrication below £25,000
87. Steel Fabrication above £25,000
88. Bridge Works, New & Maintenance

Civil Engineering Specialists

89. Concrete Repairs
90. Diving Inspections & Works within Water
91. Bridge Deck Expansion Joints
92. Bridge Deck Water Proofing

93. Soil Nailing
94. Sewer Relining
95. Sewer Surveys
96. Safety Fencing
97. Bridge Parapets (Manufacture & Installation)
98. Access Plant for Inspection
99. Bridge Parapet Painting
100. Painting of Structural Steelwork
101. Arboriculturalist
102. Weedspraying
103. Weather Forecasting
104. Playground Equipment
105. Specialist Cleaning
106. Synthetic Pitches and Sports Facilities
107. Bus / Cycle Shelters
108. Traffic Signals
109. Street Lighting
110. Street Furniture
111. Specialist Contractor not listed above – please specify type of work

Mae'r dudalen hon yn fwriadol wag

STREETSCENE AND ENGINEERING CABINET COMMITTEE

2018/2019 FORWARD WORK PLAN

STREETSCENE AND ENGINEERING CABINET COMMITTEE

DATE	Agenda Items	Type (Decision, Monitoring or Information)	Rotation (Topical, Annual, Biannual, Quarterly, Monthly)	Contact Officer/Head of Service
11 Jan 2019	Lower Cwmtwrch Household Waste Recycling Centre			Mike Roberts

DATE	Agenda Items	Type (Decision, Monitoring or Information)	Rotation (Topical, Annual, Biannual, Quarterly, Monthly)	Contact Officer/Head of Service
12 Feb 2019	Quarter 3 Performance Monitoring	Monitor	Quarterly	Allison Headon
	Combined Highways and Neighbourhood Works Programme 2019-20	Decision	Annual	Dave Griffiths/ Mike Roberts
	Vehicle and Heavy Plant Fleet Procurement Programme 2019-20	Decision	Annual	Dave Griffiths

Tudalen49

Atodiad i'r Agenda

STREETSCENE AND ENGINEERING CABINET COMMITTEE

DATE	Agenda Items	Type (Decision, Monitoring or Information)	Rotation (Topical, Annual, Biannual, Quarterly, Monthly)	Contact Officer/Head of Service
5 April 2019	Land Drainage Enforcement Policy	Decision		Dave Griffiths

Tudalen50

Document is Restricted

Mae'r dudalen hon yn fwriadol wag